

TEST SET FOR MOIST CURING ROOMS

A suitable curing room can easily be assembled using the following parts:

- Curing room vaporiser (55-C0188)
- Finned type electric heaters (55-C0187)
- Humidity/temperature sensor (55-C0189/A)
- Electric control panel for humidity and temperature (55-C0186)

A typical layout of a moist curing room is illustrated in the sketch a). Each of the above items can be purchased individually.

■ 55-C0188

Curing room vaporiser.

230 V, 50-60 Hz, 1 ph.

Used to humidify curing rooms up to 150 m³ for concrete specimens. Supplied complete with automatic level control.

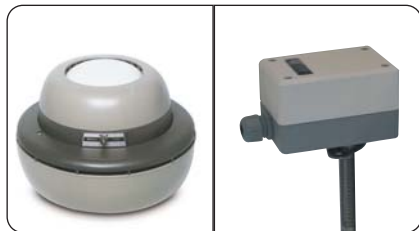
Power: 40 W

Vaporiser capacity: 0.5 l/h

For room or ambient up to: 150 m³

📦 Dimensions: 360 mm dia. x 230 mm

⚖️ Weight approx.: 3.5 kg



55-C0188

55-C0189/A

■ 55-C0187

Electric resistances for curing rooms

Finned type, made of copper, 1200 mm long, 36 mm dia. Power 750 W.

⚖️ Weight: 1.8 kg approx.



55-C0187

■ 55-C0186

Digital control panel for humidity and temperature control.

230 V, 50-60 Hz, 1 ph.



Includes humidity and temperature display, main switch and auxiliary contact for door open with pilot lamp.

📦 Dimensions: 250x140x300 mm

⚖️ Weight approx.: 6.5 kg

■ 55-C0189/A

Humidity and temperature PT 100 sensor

Working range:

- humidity: up to 100%
- temperature: -40+80°C

📦 Dimensions: 120x80x300 mm

⚖️ Weight approx.: 0.5 kg

ACCELERATED CONCRETE CURING

Introduction

This test method covers procedures for curing concrete specimens under conditions intended to accelerate the development of strength. The apparatus offered covers procedures A (warm water method) of ASTM C684 and 35-55°C methods of BS 1881:112.

STANDARD

ASTM C684, BS 1881:112

■ 55-C0194/D

Programmable accelerated concrete curing tank. 380 V, 50 Hz, 3 ph.

General description and specifications

This special curing tank has been designed for hot water curing in accelerated strength concrete. The interior is made from stainless steel, it is fitted with electronic programmer capable of controlling different test cycles with a choice of thermal gradients and curing time to a defined temperature value for a complete automatic curing cycle. The electronic controller can be connected by the RS 232 port to a printer or PC for complete monitoring of the test.

Temperature range: ambient to +80°C

Power rating: 2x3000 W

Internal dimensions:

900x640x670(h) mm

📦 Outside dimensions:

950x800x870(h) mm

⚖️ Weight approx.: 130 kg



55-C0194/D

Sketch a)

- 1 Control panel 55-C0186
- 2 Vaporiser 55-C0188
- 3 Heaters 55-C0187
- 4 Humidity / temperature sensor 55-C0189/A

